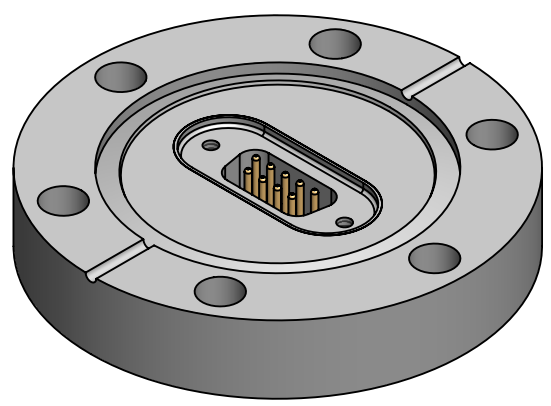
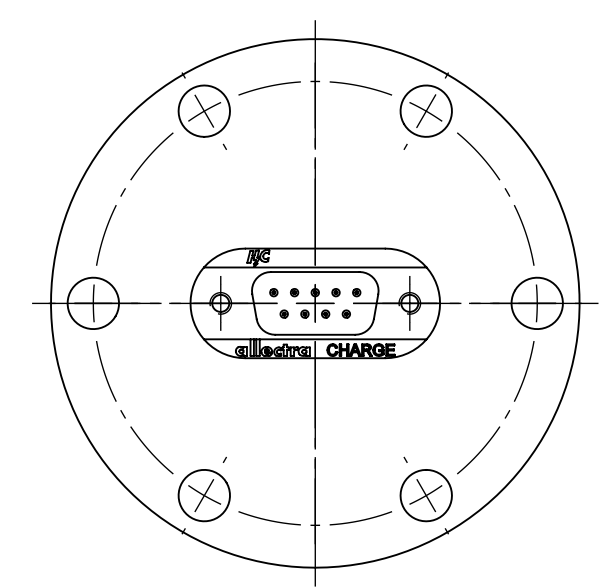
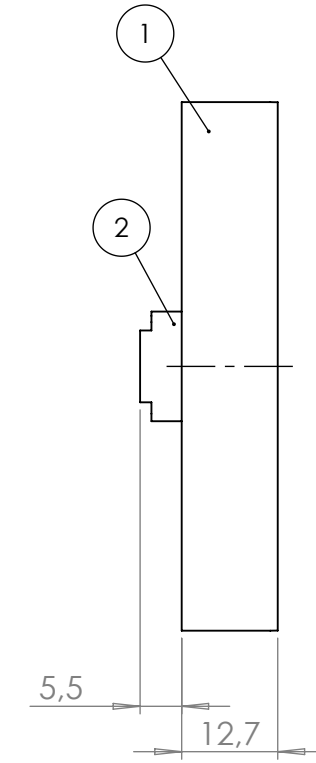
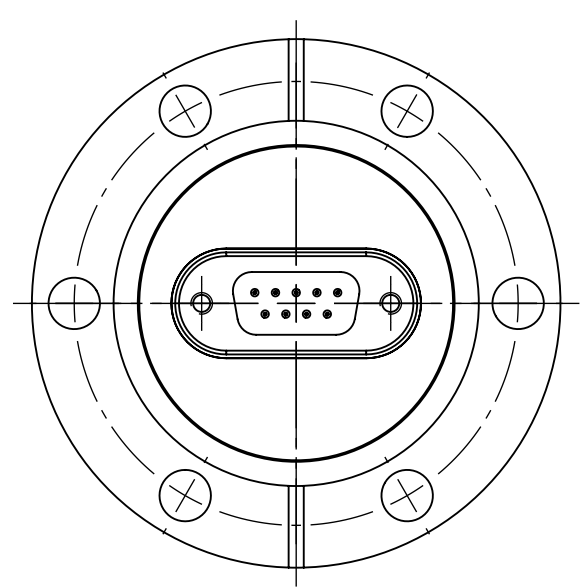


POS.	DESCRIPTION	MATERIAL	QTY
1	modified flange DN40CF	1.4404 (316L)	1
2	9 pin SUB-D f/t, high current	stainless steel	1



All informations provided in this drawing is considered to be confidential, proprietary and secret information. It is intended only for the use of individual or entity to whom it is sent. Individual or entity agrees to not disseminate or copy this information to anyone other than originally specified without the written consent Allectra GmbH.		Verwendetes Material (USED MATERIAL) HSG=38		Bemerkung (REMARKS)		Kanten (EDGES) 		PROJECTION 	
Oberfläche (SURFACE) Cleaned UHV- Compatible		Toleranz (TOLERANCE) DIN EN 1390-C (welding ASSY)		Maßstab (SCALE): 1:1		Gewicht (WIGHT):		375.22g	
Rauheit (ROUGHNESS) 		Werkstoff (MATERIAL):		Bl. (page)		page		pages	
origin name Allectra standard		DATE		NAME		A4		1	
origin (drw/sketch/part no)		Design		AD		1		1	
date of origin		Drawn		AD		1		1	
00 first origin		Check		JB		1		1	
		Approv		AD		1		1	
REV Beschreibung (CHANGING)		LAST SAVE DAT.: 10.11.2023		part. no. 210-D09-C40-HC		Benennung (DESCRIPTION): 1 off 9 pin SUB-D f/t, high current on flange DN40 CF		Zeich. Nr. (Drw. No.): 210-D09-C40-HC	
								REV 00	